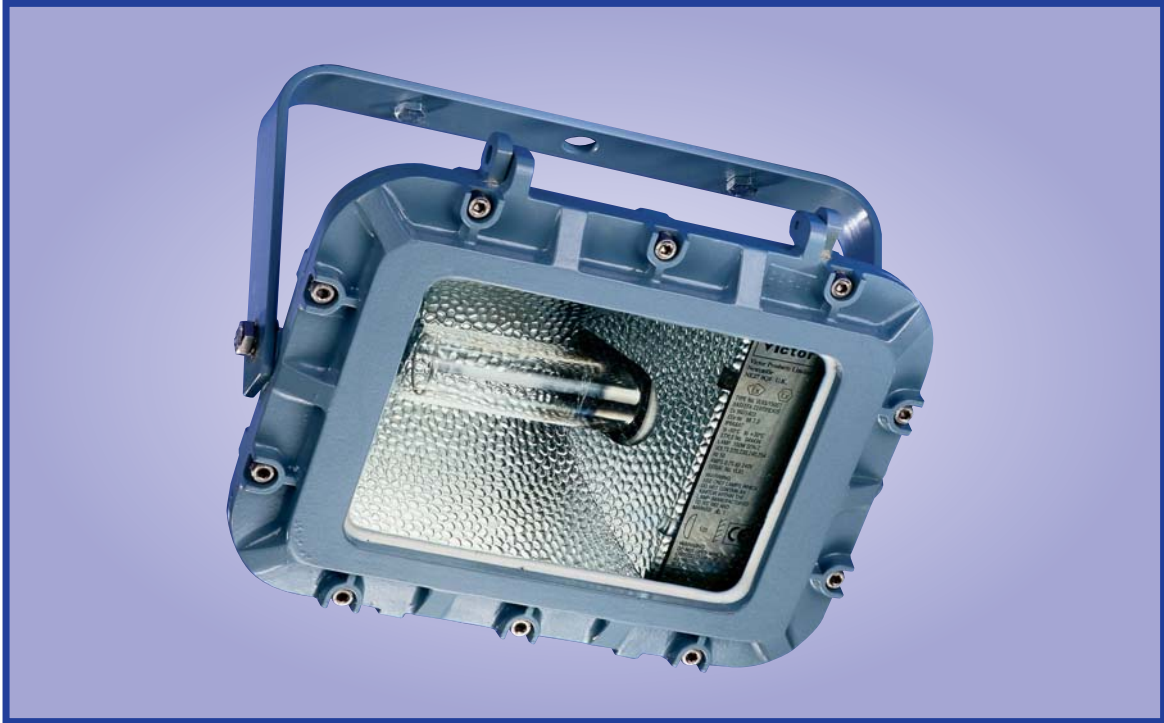


FLOODLIGHT VL65A



FLAMEPROOF TYPE Ex 'de' MINI FLOODLIGHT

APPLICATIONS

- | Zone 1 hazardous gas areas
- | Zone 21 hazardous dust environments
- | Onshore/offshore oil and gas industry
- | Tank farms
- | Security and perimeter lighting
- | Arduous industrial environments

CERTIFICATION AND APPROVAL

ATEX Certificate number SIRA04ATEX1062

Ex II 2 GD EEx de IIB T3

Ambient temperature range:
-50°C to +55°C
(See details of T ratings, lamps and ambient temperature variants)

Ingress protection to IP66 and IP67

GOST Approved



FEATURES AND BENEFITS

- | Excellent Photometrics from narrow, medium or wide beam patterns
- | Compact mini floodlight with integral control gear
- | Reduced weight for easier installation
- | Extensive lamp options SON/T, SON/E, MBI, 50W,70W MBFU 50W/80W/125W, and Tungsten Halogen 250W
- | Captive front cover bolts
- | Hinged cover
- | Ex 'e' terminal chamber as standard

CATEGORY 2 TYPE Ex 'd' FLAMEPROOF

ORDERING REFERENCE

Std. Cat Ref.	Wattage	Lamp Type	Lampholder	T Class	T °C (Dust)	Ambient °C
V65D/050/HS	50W	HPS	E27	T3	200	55
V65D/050/MV	50W	Mercury Vapour	E27	T3	200	55
V65D/070/MS	70W	HPS/Metal Halide	E27	T3	200	55
V65D/080/MV	80W	Mercury Vapour	E27	T3	200	55
V65D/125/MV	125W	Mercury Vapour	E27	T3	200	55
V65D/250/TH	250W	Tungsten Halogen	E27	T3	200	30

TECHNICAL SPECIFICATION

LAMP TYPE

SON/T 50W & 70W
 MBI or MBI-T 70W
 MBFU 50W, 80W, 125W
 Tungsten Halogen 250W max

POWER SUPPLY

220V, 230V, 240V and 254V 50Hz multi-tapped as standard. Factory wired to 240V 50Hz.
 Tungsten Halogen, 250V max. 60Hz versions also available.

POWER FACTOR

Better than 0.85

TERMINALS

Suitable for looping up to 6mm² conductors. internal and external earth fitted as standard.

CABLE ENTRIES

2 entry terminal box with M20 x 1.5 tapping as standard.
 M25 available on request. Other tappings available on request.

MATERIALS

Main Body - LM6 aluminium with epoxy paint finish as standard.
 Lampglass - Toughened soda lime glass plate.
 External fasteners - Stainless steel.

WEIGHT

Discharge lamp versions - 13Kg
 Tungsten halogen lamp versions - 10Kg

MOUNTINGS

Trunion bracket pre-drilled with central hole of 21 mm diameter and two 13mm diameter holes on 220mm centres for fixing. The luminaire can be mounted in any attitude.

BEAM PATTERNS

Narrow, medium or wide beam patterns available. Patterned or plain reflectors combined with forward and rear lamp positions provide the beam pattern options. MBFU lamps must be used in the forward lamp position for wide beam patterns.

OPTIONS - SUFFIX TO CATALOGUE REF.

- /60** 60Hz
- /M25** M25 Entries
- /N** Narrow beam reflector (Not available with Mercury Vapour lamps)
- /M** Medium beam reflector (Not available with Mercury Vapour lamps)

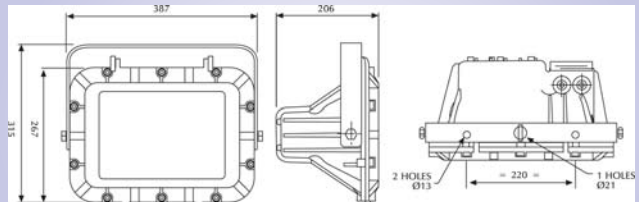
ACCESSORIES

Description

There are no accessories for this product

DIMENSIONS

© 2006



Dimensions in millimetres

To calculate photometric values for lighting design, please use the free Victor "Lite Guide" software package. To request your copy, please contact your local Victor agent or use the request form on the website.