



Industry/OEM

Cable and Pipe Seals



We Seal Your World



No more cutting off connectors

The Roxtec sealing system allows pre-terminated cables to be routed through the opening of the entry seals. Avoiding cutting and re-attaching connectors results in better connectivity and less risk for EMI and signal loss.

Avoiding failure

Typically, connectors are too large to fit through traditional cord grips and glands. They have to be removed to route the cable into the enclosure. Our Roxtec enclosure seals have large internal openings making them ideal for use with pre-terminated cables. This means that the time consuming and insecure detaching and re-attaching of connectors on site is eliminated. By using pre-terminated cables you are in total control. Full quality soldering

and connections from the factory guarantee the undisturbed function of your system. With pre-terminated cables you can calibrate, adjust and trim the system from the start at factory. This enables you to save a substantial amount of time.

- Allows cables with connectors
- Major time savings
- Longterm operational reliability



Maximize space in a cabinet



- Several cables and pipes per opening
- Enables smaller cabinets
- Allows work-bench assembly
- Adapter plates for cabinets



Make fewer openings for cables and pipes

Roxtec's solutions offer very efficient installations. Each entry seal allows several cables or pipes to be routed and sealed through just one opening. This eliminates entirely the need to punch different holes of different sizes for traditional cable glands in a cabinet.

Enables smaller cabinets

Thanks to the area efficiency and the compact design of the Roxtec solutions, it is also possible to reduce the size of a cabinet. Fewer holes for cables, pipes and hoses mean less space is used for entry seals, which allows more space



for equipment. Subsequently, with Roxtec smaller cabinets can be used, which reduces costs.

One standard

The flexibility to handle several cables and pipes of different sizes through one opening makes an excellent standardization of entry seals for your cabinets and equipment.

Work-bench assembly

A Roxtec entry seal can be pre-packed at the work-bench with cables and connectors ready for quick installation at manufacturing, or in the field. This saves time and simplifies installation work.



Fewer warranty claims



- Less need for redesign
- Standardizes installations
- Engineered for flexibility

Engineered for flexible installations

Our customers use the flexible Roxtec solutions to standardize their installation process. The ability to seal cables, pipes and hoses through one opening reduces lead times in projects and eliminates the need to redesign the routing at a later stage. A project that can leave the factory more quickly means minimum time-to-market.

Reduced costs

An even bigger benefit is radical reductions in warranty claims. By using Roxtec our clients have been able to achieve safer and more reliable installation of cables with connectors. This reduces their costs for repairs after delivery due to component failure and improper routing.

Roxtec in OEM Industry

Roxtec transits are found in many places and applications within the OEM industry. Shown here are a few examples of installations where our customers benefit from the flexibility and efficiency of our solutions.

The Roxtec CF 10 transit is easy to attach to a cabinet, either by use of self-adhesive tape or with screws. Here it is installed in the top of a control cabinet.



Roxtec S 4x1 in the floor of the driver's cabin of a giant mining dump truck. Used for mechanical anchorage of cables and reduction of vibration.



The Roxtec RG M63 replaces traditional cable glands, allowing instead several cables to be routed through just one opening in a cabinet. Here, installed in a switching cabinet.



The Roxtec CF 24 transit simplifies installation around existing cables. Here, installed in the wall of a power drive.



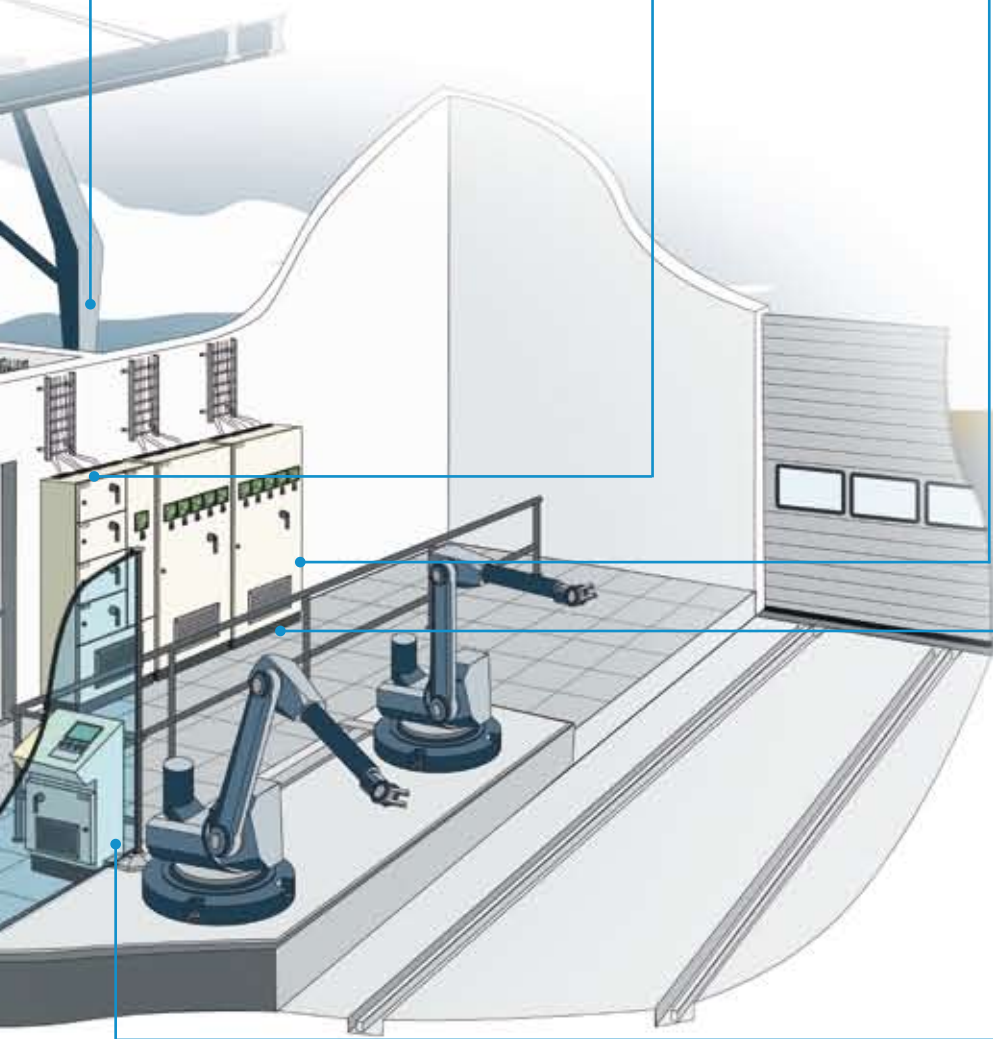
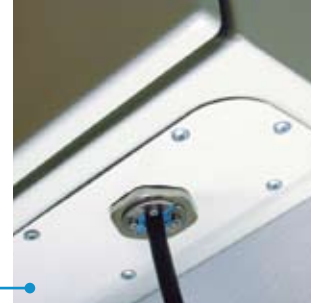
Roxtec S 6x3 transits handle electrical control cables in to control cabinets on the outside of a container loading crane.



A Roxtec CF 32 transit has two openings and can accommodate several cables in a small space. Here, installed in the side of a power supply cabinet.



Example shows a Roxtec C RS T installed on an adapter plate attached to a standard opening for cabinets.

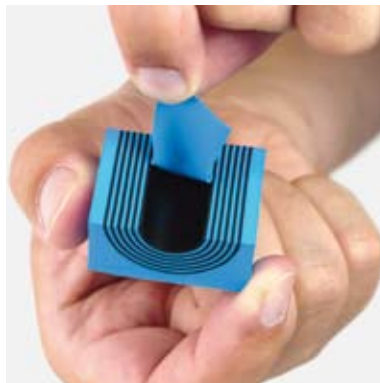


Example of Roxtec KFO transits installed below a cabinet to ensure a proper seal of cables passing through the floor from a substation.



A Roxtec CF 16 maximizes free space in a cabinet thanks to a compact design. Here, it is installed in a control cabinet for robotic routing machines.

A truly flexible sealing system



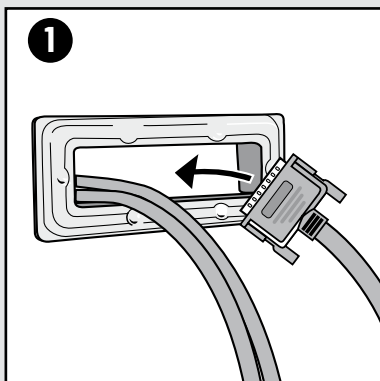
Multidiameter™ by Roxtec

The smart adaptability of the Roxtec technology makes installation of cables and pipes easy and safe. The core of each Roxtec seal has removable layers that enable a perfect fit to different sizes of cable or pipe. Just peel a few layers and the seal fits the desired dimension. One Roxtec seal can replace as many as 15 traditional seals.

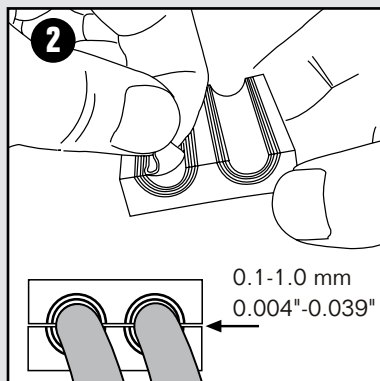
Spare capacity

Whenever more cables or pipes need to be installed in the future, our unique sealing technology is ready. Multidiameter™, based on modules with removable layers, allows any previously unused seals in a frame to be opened and adapted to fit the new routing. The amount of the spare capacity can be decided by the client from the start, allowing additional cables and pipes later at no further cost.

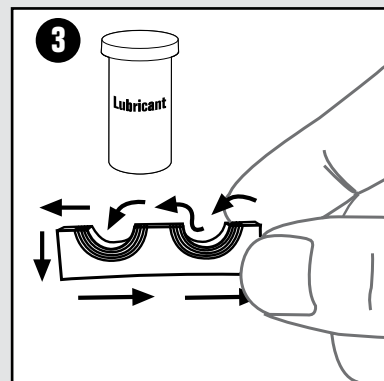
How it works - example of Roxtec CF 16



1 Assemble the frame to the cabinet. Insert the cables through the frame.



2 Achieve a 0.1-1.0 mm gap between the module halves when testing with the cable.



3 Lubricate all the modules thoroughly with Roxtec Lubricant.



Easy installation

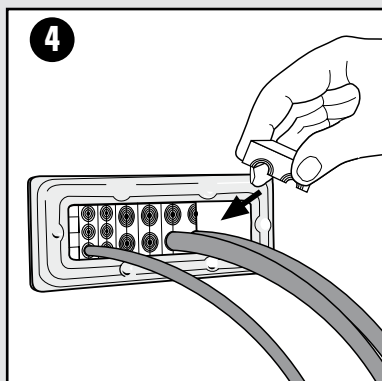
Our products are easy to install. A Roxtec entry seal can easily be opened for maintenance and closed again. Thanks to the modular design and Multidiameter™, our technology based on sealing modules with removable layers, cables and pipes can be added and retrofit is made easier.

Protection through Roxtec

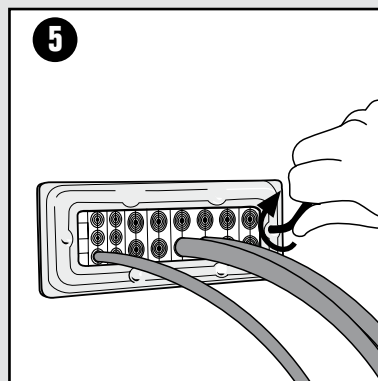
The Roxtec cable and pipe entry seals provide protection against a wide range of hazards. Typical examples are gas, smoke, dust, fire, vibration and electromagnetic interference. The system is tested and certified by the majority of authorities for ratings.

- IP 54, IP 66/67
- Fire protection
- Vibration Dampening
- ATEX
- UL/NEMA 4, 4X, 12 and 13
- EMC
- Pull-out resistance

For details about specific product rating, please contact Roxtec.



4
Insert the modules around the cables.



5
Tighten the frame screws to compress the seal.

The frame is mounted onto the enclosure, and cables are routed through the frame. The modules are then inserted around the cables inside the frame, creating an intrusion-proof seal by compressing the rubber modules after tightening. An existing seal can be opened and reconfigured in the same way it is assembled.

Examples shows assembly of Roxtec CF 16. Other solutions work similarly, but may host different benefits.

Only one part number



- Standardized kits
- One part number
- Multidiameter™

Simple logistics

We supply our customers with smart kit solutions, flexible enough to handle a wide variety of cables, cable configurations, pipes and hoses. The Roxtec kit solutions, with one part number, make planning, purchasing and installation a lot easier.

The need for future expansion is also considered in a kit. Multidiameter™, the Roxtec

technology based on modules with layers that you can peel off, allows capacity for future installations and reduces future maintenance costs.

A kit installation can always be finished on site since the modules themselves compensate for any surprises or last-minute changes. Everyone in the project, from design to maintenance, will benefit and stocks can be kept low.

Local support, globally

Local availability

The Roxtec solutions are available worldwide through our network of local suppliers. This means fast deliveries from local stocks in more than 70 markets.

Local support

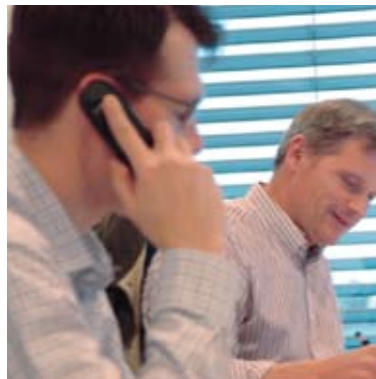
Roxtec is much more than a supplier. Our sales and support staff

around the world play an active role in helping our customers finding their optimum solution to suit their needs and applications.

Product installation training

Whenever desired we provide product installation training through our sales staff and technicians. Call us for more information.

- Local stocks around the world for fast, on-time deliveries
- Local support with domestic staff and sales engineers
- On site product installation training available locally



Among our customers are:

ABB Generators, Alstom, Areva, Aventis, Barilla, Bombardier, ConocoPhillips, Dow Chemical, Dürr Paint Systems Application, Enercon, Fanuc Robotics, Gamesa Eolica, GlaxoSmithKline, Komatsu Loher GmbH, Max-Planck-Institut, Mining Germany GmbH, Multibrid Technology, M Torres, Nestlé, Pauwels Transformers, PSA Peugeot, R. Stahl Schaltgeräte GmbH, Sidel, ST Microelectronic, Tetra Pak, Vestas Wind Systems A/S.