

# Explosion Proof Glands

## CW Aluminium Gland with Integral Earth 454CE Series



### Application

- > For aluminium wire armour cable

### Features & Benefits

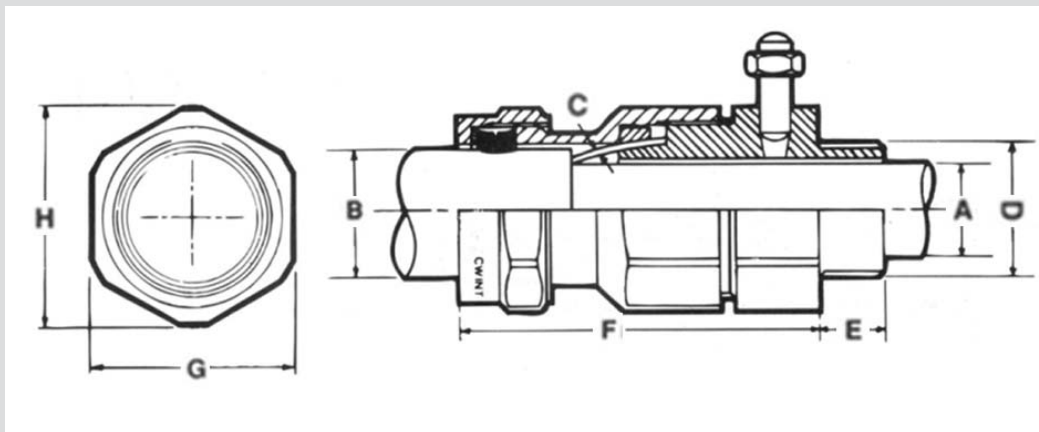
- > Aluminium indoor and outdoor cable gland with earth bonding connection
- > Suitable for circular aluminium single wire armoured, plastic or rubber sheathed cables
- > Outer seal grips sheath of cable
- > For use in most climatic conditions, weatherproof and waterproof
- > Three part armour lock with separate armour locking ring
- > Accessories available separately

### Technical Data

- > EN50262
- > Gland rated to IP66 with use of suitable sealing washer or thread sealant at gland interface
- > Service temperature range -20°C to +90°C
- > Integral earth connection complies with GDCD 190 Category A (43.3kA for 1 second)



# CW Aluminium Gland with Integral Earth



## Gland Details

Cable dimensions accommodated mm					Gland Reference		Glands dimension mm					Accessories
Diameter		Overall B		Armour wire diameter C	Size	Design Number	Entry thread		Approx. length from shoulder F	Hexagon size		Aluminium backnut Design number
Under armour A		Min	Max				Size	Length		Across flats G	Across corners H	
Min	Max	Min	Max				D	E				
M25 <sup>2</sup>	26.2	23.5	33.5	1.6 / 2.0	32	454CE-56	M32 × 1.5	10	73	56.4	61.5	459AA-56
M25 <sup>2</sup>	32.1	29.0	39.9	1.6 / 2.0	40	454CE-57	M40 × 1.5	15	77	56.4	63.2	459AA-57
M25 <sup>2</sup>	44.0	39.5	52.6	2.0 / 2.5	50	454CE-59	M50 × 1.5	15	84	70.1	77.2	459AA-59
M25 <sup>2</sup>	55.9	51.3	65.3	2.5	63	454CE-61	M63 × 1.5	15	84	90.2	99.1	459AA-61
M25 <sup>2</sup>	67.9	62.5	78.0	2.5	75	454CE-63	M75 × 1.5	15	94	106.2	117.0	459AA-63

Larger sizes of glands are available upon request