

# Sensor Actuator Interface

---

**Introduction**

---

---

Introduction

---

A.2

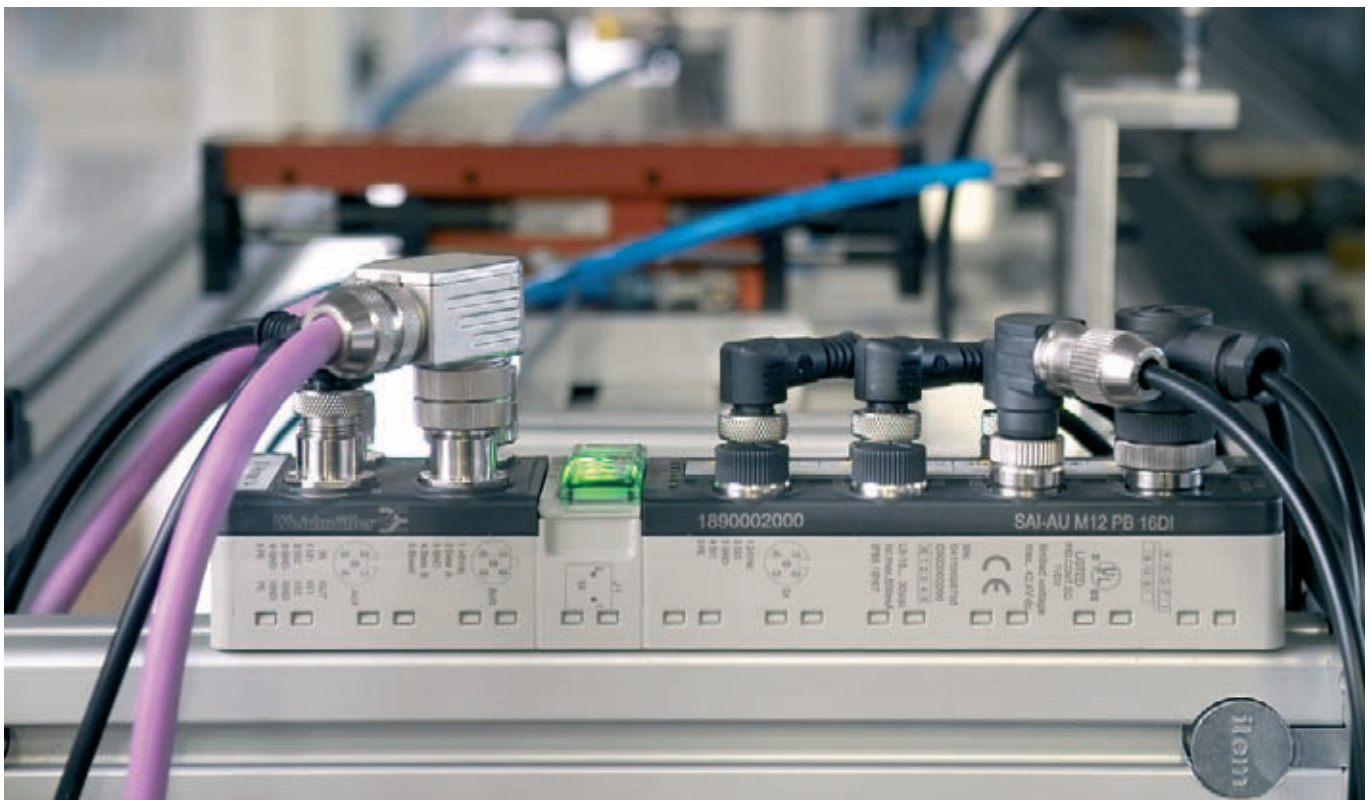
## Introduction

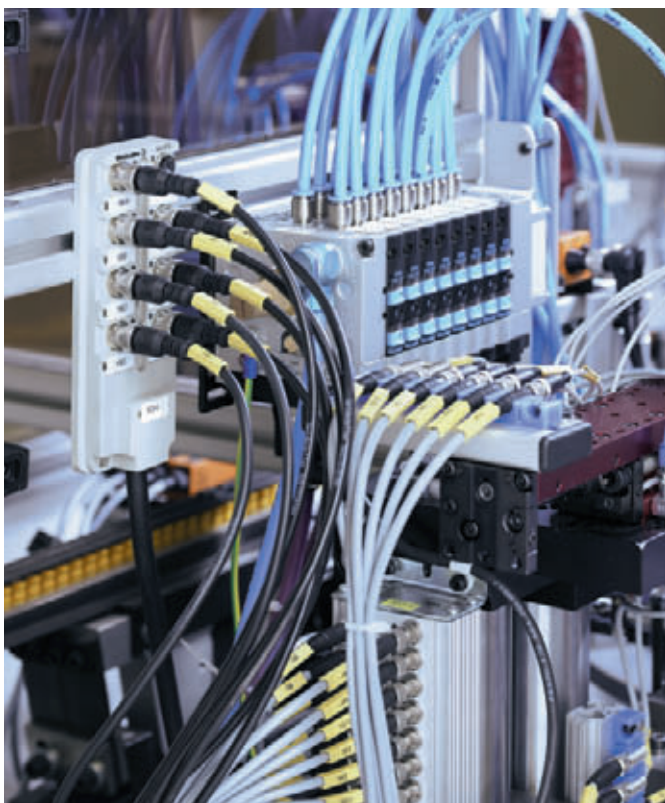
## A

It is not just by chance that Weidmüller finds itself among the global market-leaders in the distributors sector. In their development of SAI distributors, Weidmüller engineers – often in cooperation with major users – have always concentrated on achieving rational, cost-effective installation concepts, and have supplied the markets with well-conceived products. Those products have set standards in terms of functionality and quality – worldwide. The best example of this is the new FIXCON® connection system for sensors and actuators, which optimises installation time and reliability yet further.

These days, often the only way of achieving savings is by simplifying the installation work and improving the reliability and safety of the products. And that means quality right down to the tiniest detail.

Therefore, modern installation concepts have to be designed to save materials, money, time, space and weight right from the outset. Products that enable such concepts are therefore vital. And this is exactly where you can rely on Weidmüller's quality, experience and power of innovation.





Plug in – click – finished! Those few words sum up the installation instructions for the latest Weidmüller distributor design. The new FIXCON® connection system is so fast and reliable that it has already become firmly established in many areas of modern production. FIXCON® needs no screws. FIXCON® is simply plugged in and connected by means of a clip arrangement. That makes FIXCON® one of the fastest distributor systems in the world.

Weidmüller can supply SAI distributors in all customary forms, with four, six or eight connections as required in various designs – for normal and extreme applications.

SAI distributors from Weidmüller are integrated into machines and systems by “direct mounting”. They combine the signals from sensors and actuators within the machines and systems themselves. This is an easy way of cutting installation and service costs because we use pre-assembled lines and conventional M8/M12 round plug connectors.

On the other side of the distributor a bus cable leads to the control.

Depending on which type of SAI distributor is being used, the bus cable is either permanently attached (SAI-F) or can be connected to screw or tension clamp terminals (SAI-M). This latter form greatly enhances ease of servicing and cuts the cost of materials drastically. A fault in a line means that only this connection terminal with its hood has to be replaced, and not the whole distributor.

Another practical detail is the generous size of the marking area. That encourages clear labelling, which in turn simplifies fault-finding and maintenance work, and thus cuts downtimes to a minimum.



