

Printing systems

Printing systems	Introduction	E.2
	SMark Laser printer	E.3
	PrintJet II inkjet printer	E.4
	MCP Plus plotter	E.5
	MCP Plus – accessories	E.6
	MC-Mobilo	E.7
	THM PRO thermal transfer printer	E.8
	M-Print® PRO software	E.9

Printing systems and software

The Weidmüller labelling systems are the quick and efficient way of producing markers for connectors, wires, cables and devices, plus labels for general use. The **M-Print® PRO** software enables users to mark electrical equipment quickly and simply. For professional and fast design, printing and ordering of your marking requirements. Borders, barcodes, graphics or photos can all be easily integrated. The multitude of data conversion routines presents you with fast and flexible options for data integration. And the Weidmüller printers **SMark-Laser**, **PrintJet II**, **MCP Plus**, **MC-Mobilo** and **ThermoMark** are ready to meet all your printing needs.

The unique printing speed of the **SMark-Laser** makes it a real winner. The **PrintJet II** is the reference model in industrial marking for high-resolution printing and maximum wipe and scratch resistance. The **MCP Plus** plotter provides you with good flexibility because with its positioning frame it can handle more than 120 different types of marker in the MultiCard format. The **MC-Mobilo** is the ideal printer for labelling on site without a PC and a mains power supply, directly during installation work. And the **ThermoMark** is the perfect system for producing labels in outstanding quality.



Type of marker	Printer				
	SMark-Laser	PrintJet II	MCP Plus plotter	MC-Mobilo	ThermoMark
Connector markers					
DEK	●	●	●	●	
WS	●	●	●	● ¹	
ZS	●	●	●	●	
MF	●	●	●	●	
Cable and wire markers					
SF	●	●	● ²	● ²	
SFX	●	●	●	●	
SFC	●	●	●	●	
TM-I	●	●	●	●	
Device markers					
ESG	●	●	●	●	
SM	●	●	●	●	
ClipCard	●	●	●	●	
Labels					
THM MT					●
THM WriteOn					●

¹ Except WS 15/5

² SF 4 to 6 only with corresponding positioning frame

SMark-Laser

The **SMark-Laser** is a laser printer for printing on markers in the MultiCard format. The fast production of large numbers of individually printed markers is the special feature of this printer. The automatic feed function of the **SMark-Laser** increases productivity even further and ensures that your markers are available without delay.

- Fast printing speed, 4 MultiCards per minute
- Markers can be used immediately
- Fast operation irrespective of the file size
- Good flexibility thanks to production of markers in MultiCard format to meet users' requirements
- Reduces stocks because only blank markers are required
- Printing of graphics and logos as well
- Optional automatic feed for large quantities
- Can be used together with the Weidmüller **M-Print® PRO** software



Technical data

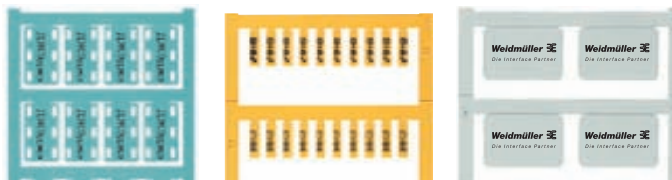
Type	SMark-Laser
Application	Prints all MultiCards
Technology	Laser printer
Printing speed	4 MultiCards per minute
Print quality	600 dpi
Printer drivers	WIN3.x, 9x, NT, HP III compatible
Software	M-Print settings, commercially-available standard software
System requirements	Windows 98/NT/2000/XP
Feed	Manual or with optional loader
Interfaces	Centronics optional, Apple Talk
Power supply	AC 230 V / 50 Hz / 16 A
Ambient conditions	20 °C – 35 °C
Dimensions: (L x W x H)	1000 x 430 x 380 mm
Scope of supply	Laser printer, power cable, printer drivers, manual, interface cable, M-Print® PRO software

Ordering data

SMark-Laser

Type	Order No.
SMark-Laser	1767090000
Rack	1782880000
Special toner cartridge	1770070000

Print options



Inkjet printer

PrintJet II

Individual equipment labels and markers are conveniently and quickly produced with Weidmüller's **PrintJet II** inkjet printer. The PrintJet II produces brilliant, permanently legible markers in the MultiCard format for switchgear, automatic devices, modular terminals, cables, wires or valves. The Weidmüller PrintJet II places industry's reference inkjet printer at your disposal. Maximum wipe and scratch resistance, UV stability and a high print resolution for all MultiCard markers provide you with reliable, permanent labelling.

The PrintJet II permits the printing of very fine fonts, graphics, logos and illustrations. Even the very smallest of characters are clearly legible and this permits even more information to be included on markers. Damaged plotter nibs and long ink drying times are now a thing of the past.

- High-resolution printing
- High-contrast printing
- Highly resistant marking to replace engraving
- Permanently legible marking
- Fast and easy to use
- Prints on all MultiCards
- Also prints logos and graphics
- The feeding device can be loaded with up to 20 MultiCards



Technical data

PrintJet II	
Type	PrintJet II
Application	Prints MultiCard markers
Technology	Inkjet process
Print quality	2880 dpi
Printer drivers	Win 9X, Win NT, Windows 2000
Print software	Recommended: M-Print® PRO
System requirements	Windows 98/NT/2000/XP
Feed	Manual or with optional loader
Fusing	Thermal fusing
Interface	Centronics and USB
Power supply	230/115 V AC
Location	Office conditions
Ambient temperature	10 °C – 35 °C
Dimensions (L x W x H)	800 x 450 x 200 mm
Cartridge system	Ink cartridge, black (210 000 characters, Arial font size 6); average printing output per day: 20 MultiCards; max. printing output per day: 100 MultiCards
Scope of supply	PrintJet printer, power cable, printer drivers, manuals (CD), cleaning unit, centronics cable, M-Print® PRO software
PrintJet Loader	
System requirements	PrintJet printer
Marker types	MultiCard format
Operating voltage	12 V/DC
Current input	approx. 1 A
Interface	Connection via plug-in connector
Location	Office conditions
Ambient temperature	10 °C – 35 °C
Dimensions (L x W x H)	345 x 305 x 155 mm
Weight	4 kg

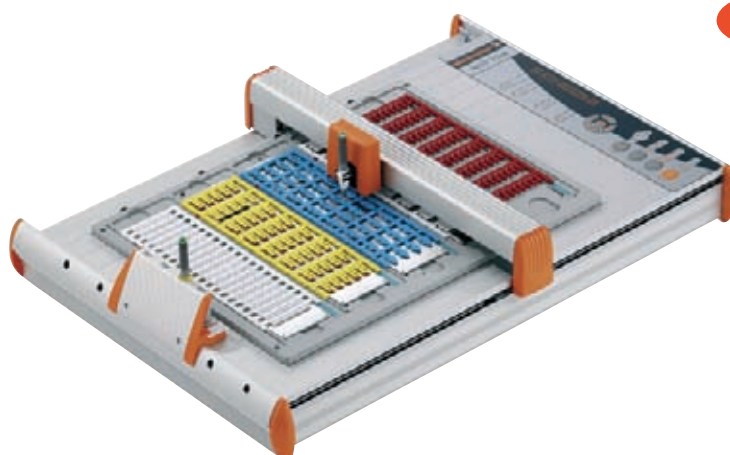
Ordering data

Type	PrintJet II Order No.
PrintJet II 115 V	1858980000
PrintJet II 230 V	1858990000
PrintJet Loader	1813090000
Accessories	
Ink cartridge PrintJet II	1858920000
Clean Unit PrintJet II	1858950000
Ink cartridge PrintJet	1797460000
Clean Unit PrintJet	4062150000

MCP Plus

Plotter complements the Weidmüller MultiCard concept. It is suitable for smaller quantities of markers and when only part of a MultiCard is to be printed on. The special positioning frame for five MultiCards increases productivity by 20 % over comparable systems. With the positioning frame for SlimFix markers sizes 4 to 6, printing on more than 120 MultiCard types for terminals, cables, wires and equipment is possible. Labels are printed with the MCP-Label positioning frame. Suitable for use with the Weidmüller **M-Print® PRO** software.

- 2 positioning frames for more than 120 MultiCard types
- MultiCards easily fitted into the frame
- Easy to use with partly used MultiCards
- Automatic pen activation function
- Safe storage of the plotter pens



n

Technical data

Type	Plotter
Application	printing of MultiCard markers and labels
Technology	plotting technique
Print software	M-Print® PRO
System requirements	Windows 95/98/NT/2000/XP
Interface	Parallel Centronics
Power supply	230/115 V AC
Feed	manual
Location	office conditions
Ambient temperature	10 °C – 35 °C
Dimensions (L x W x H)	660 x 440 x 125 mm
Weight	approx. 8 kg
Scope of supply	MCP Plus with Centronics cable, power pack (100-240 V AC/50-60 Hz), Euro and US plugs, MultiCard positioning frame, 0.25 mm plotter pen, M-Print® PRO software and manual

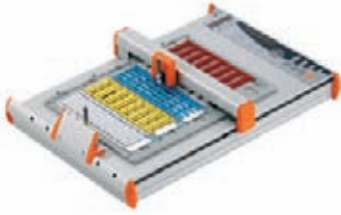
Ordering data

MCP Plus

Type	Order No.
MCP Plus plotter set	192500000

Note: Available from July 2006

Plotter MCP Plus



MCP positioning frames

Ordering data

Type	Für	Qty	Order No.
MCP pos. frame	MultiCards	1	1924360000
MCP pos. frame SF 4-6	SlimFix sizes 4 to 6	1	1924310000
MCP pos. frame labels	Labels	1	1924370000

Note: Available from July 2006

MCP plotter pens

Type	Für	Qty	Order No.
Plotter pen 0.18	Reusable pen	1	1768570000
Plotter pen 0.25	Reusable pen	1	1768540000
Plotter pen 0.25 P ink	Disposable pen 8 ml	1	1920640000
Plotter pen 0.35	Reusable pen	1	1768550000
Plotter pen 0.35 P ink	Disposable pen 8 ml	1	1920650000
Plotter pen 0.50	Reusable pen	1	1768560000

MCP ink

Type	Inhalt	Qty	Order No.
P ink	22 ml	1	1924340000
MCD ink	22 ml	1	1684470000

MCP miscellaneous

Type	Inhalt	Qty	Order No.
MCP adhesive strips		5	1924320000
P cleaner	22 ml	1	1924330000
MCP cover		1	1924350000
Cleaning beaker		1	1288300000
MCD cleaner	22 ml	1	1684460000

Note: Available from July 2006

MCP software

Type	Qty	Order No.
M-PRINT PRO	1	1905490000



MC Mobilo

The MC-Mobilo allows users to work directly at place. There is no need for a PC and no need for a power supply so electrical equipment can be labelled anywhere, anytime. The rechargeable battery provides power for up to 3 hours. The universal inlay enables up to 120 different marker types of the MultiCard range to be processed. The MC-Mobilo is supplied with the MC configurations, rechargeable battery, charger and universal inlay in a sturdy, convenient carry case.

Ordering data

Type	Qty	Order No.
MC Mobilo 110/220V	1	1741260001

MC Mobilo accessories

Type	Qty	Order No.
Printing kit	1	1686920000
Frame inlay SF 4-6	1	1802180000

MC Mobilo miscellaneous

Type	Qty	Order No.
P ink	1	1924340000
MCD ink	1	1684470000
Ink 2000 25ml	1	1772120000
Plotter adapter (w/o nib)	1	1684480000
P cleaner	1	1924330000
Printing kit	1	1686920000
Plotter pen 0.18	1	1768570000
Plotter pen 0.25	1	1768540000
Plotter pen 0.25 P ink	1	1920640000
Plotter pen 0.35	1	1768550000
Plotter pen 0.35 P ink	1	1920650000
Plotter pen 0.50	1	1768560000
Cleaner Clean 2000 25ml	1	1772130000
Cleaning beaker	1	1288300000
MCD cleaner	1	1684460000



Accessories - STI pen

The STI-S felt tip pen is suitable for labelling blank Weidmüller marking products. It can be used for handwritten labels or, in conjunction with the STI-S adapter, for a plotter printout. A black, waterproof ink is used.

Ordering data

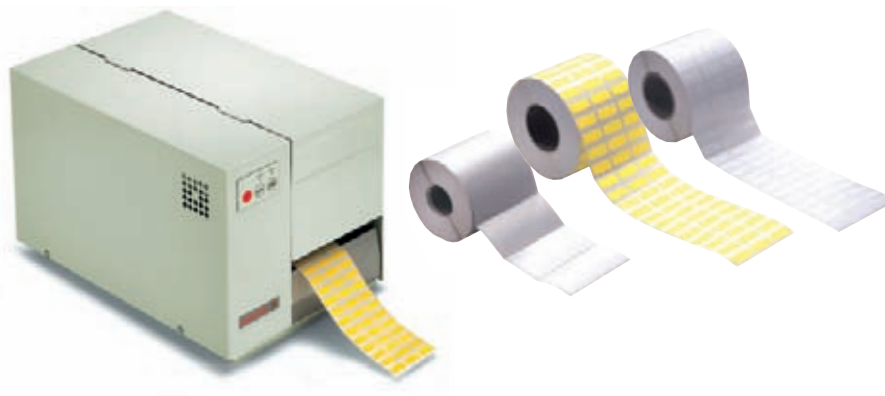
Type	Qty	Order No.
Adapter aluminium STI pen	1	1762440000
STI pen SW	10	0508401694

Thermal transfer printer

THM

The **ThermoMark** is a printing system based on thermal transfer technology and is intended for industrial labelling requirements. A robust metal housing protects the printer against dust and dirt. The printer provides high-quality output and is suitable for printing on different materials. This user-friendly system functions with the Weidmüller **M-Print® PRO** software.

- Printer for producing texts, graphics and barcodes
- Automatic positioning of labels in the printer for perfectly centred printing on every label
- Robust printing thanks to the HiRes ribbon
- Functions with the Weidmüller **M-Print® PRO** software



Technical data

Type	THM Pro printer
Application	printing of labels
Technology	thermal transfer
Printing speed	80 mm/s
Printing quality	204 dpi
Printer drivers	Windows 98/ NT/ 2000/XP
Print software	M-Print® PRO
System requirements	Windows 98/ NT/ 2000/XP
Interface	Centronics
Power supply	220 V
Location	office conditions
Ambient temperature	-10 °C to +35 °C
Dimensions (L x W x H)	350 x 250 x 220 mm
Scope of supply	ribbon (HiRes), drivers, power cable

Ordering data

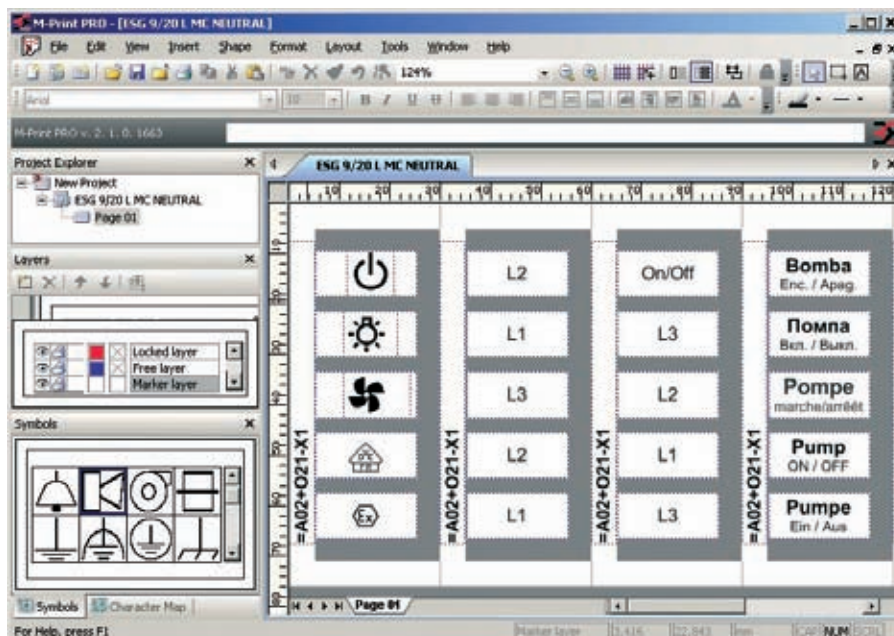
Printer/Software

Type				Order No.
THM Pro Printer				1785240000
M-Print® PRO				1905490000
Printing foil	Material	Width (mm)		
HiRes ribbon, 280 m	resin	110		1790650000

M-Print® PRO Label Designer

Print and ordering software for markers and labels

M-Print® PRO is a professional software for printing and ordering Weidmüller markers and labels under Windows®. This software helps you to optimise your processes for marking electrical equipment. You can design, print and order your marking materials effortlessly, professionally and quickly: texts, frames, lines, graphics, barcodes, serial numbers and photos.



Technical data

Here is an overview of the main functions

Integrated product catalogue for all labels and markers, including images and links to the relevant web pages and product data sheets

Markers and labels can be designed in as many levels as required

Custom formatting of individual text characters (RTF)

Perform copy-and-paste functions with texts and their formats

Supports UNICODE for foreign-language texts, such as Russian, Chinese, Polish, etc.

Enter data on labels or worksheet

Permanent print preview: see how the printout will look during the design phase

Alphanumeric counts and sequences

Extensive range of image formats (*.bmp, *.wmf, *.png, *.ico, *.jpeg, *.tif, *.gif)

Image library including all the important symbols used in electrical engineering

Assign product to specific printer; for example, ESG 9/20 to PrintJet, LaserMark to laser printer, etc.

Output devices supported: PrintJet I+II, SMark-Laser, ThermoCard, THM as well as standard printers with Windows drivers

Optimum and rapid adjustment of the output devices

Online update service via the Internet

Interface to RailDesigner®

Import assistant to create your own import filter for numerous file formats (*.txt, *.asc, *.mak, *.wei, *.tmf, etc.)

Imports data from CAE systems

Operating systems supported

WINDOWS® 98 SE, ME, NT, 2000, XP, Server 2003

System requirements

- RAM > 64 MB
- Processor > Pentium PIII or comparable model
- Graphics > 800 x 600 pixels with 256 colours
optimum: 1024 x 768 with 16-bit High Colour
- Hard drive > 90 MB free storage
- Miscellaneous mouse, keyboard, CD-ROM drive (to install the software)

M-Print® PRO is available in two editions:

M-Print® PRO Standard Edition for professional printing results with all of Weidmüller's marking materials

M-Print® PRO Advanced Edition for professional printing results with all of Weidmüller's marking materials plus labels to customer specification

Ordering data

M-Print® PRO

Type	Order No.
M-Print® PRO	1905490000
M-Print® PRO advanced	1905500000

