

Device markers

Device markers	Introduction	D.2
	ESG - tags	D.3
	SwitchMark SM	D.4
	ClipCard CC	D.6
	LogiMark	D.8
	Blank labels	D.9
	Printed labels	D.12

Introduction

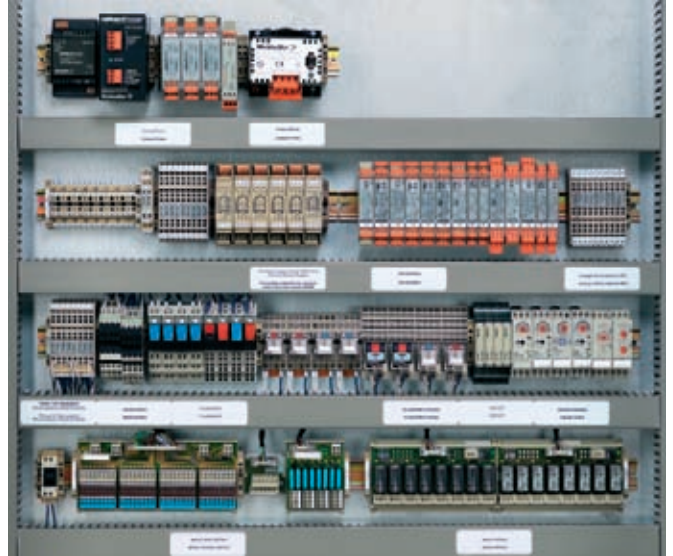
Markers for devices and installations

Device and installation markers round off the range of switch-gear markers. By utilising Weidmüller's device markers, users comply with official regulations requiring marking of electrical equipment. Weidmüller offers corresponding markers for devices made by well-known manufactures. Mirroring their original counterparts, these tags are attached with the traditional adhesive or rapid clip-on techniques. By utilising the corresponding software and system-compatible printer or plotter system, users can print their own markings on these markers.

D

Weidmüller also offers ready-to-use printed labels in the form of a Symbol Packs or Service Packs.

A samples bag containing a selection of device and installation markers is available under the order no. **1646370000**.



SwitchMark

ESG

Labels

ClipCard



	SwitchMark	ESG	Labels	ClipCard
Cable ducts			●	●
Automatic switchgear	●	●	●	●
Contactors	●	●	●	
Electrical connections			●	●
Electrical devices			●	●
Machines			●	
LED displays	●			
Keyboards	●		●	●
Lamps				
Murr valve plug		●		
Tubes			●	●
Circuit-breakers		●	●	
Relays		●	●	
Shelves			●	
Switches	●	●	●	●
Control desk	●	●	●	●
Transformers		●	●	
Valves			●	●



ESG - blank

Technical specification

UL 94 flammability rating	V2
Min. temperature, continuous	-40 °C
Max. temperature, continuous	100 °C
Material	Polyamide 66

ESG is the well-established marker in MultiCard format for many well-known devices. This is a high-quality device marker with a high-contrast appearance.

- For devices from ABB, Siemens, Moeller and Télémécanique.
- For universal use - available in self-adhesive and clip-on forms.
- Ideal for clipping to tag rails for marking rows of circuit-breakers or other equipment.

Ordering data

Type	Application	Width/Length	Qty	Order No.
ESG 5/10 MC white	Turck/Beckhoff SAI distributor	10 mm/5 mm	400	1919940000
ESG 6/15 K MC yellow	self-adhesive	15 mm/6 mm	200	1880130000
ESG 6/15 MC Riders, white	Rider series SCM/SRC	15 mm/6 mm	200	1881280000
ESG 6/15 K MC white	self-adhesive	15 mm/6 mm	200	1880100000
ESG 6/17 K MC yellow	self-adhesive	17 mm/6 mm	200	1880110000
ESG 6/17 K MC white	self-adhesive	17 mm/6 mm	200	1880120000
ESG 7/20 Sirius white	Siemens Sirius 3R/SCHS 3 & 4	17 mm/8 mm	200	1736181044
ESG 8/10 MC ASI white	Siemens AS interface	10 mm/8 mm	200	1736190000
ESG 8/17 MC white	Télémécanique	17 mm/8 mm	200	1674740000
ESG 7/20 Sirius turquoise	Siemens Sirius 3R/SCHS 3 & 4	20 mm/7 mm	200	1736181696
ESG 8/17 SCHS MC white	SCHS2	17 mm/8 mm	200	1720610000
ESG 8/17 Sys Pro M white	AEG/ABB-Stotz	17 mm/8 mm	200	1755340000
ESG 8/17 L MC white	Lumberg distributor	17 mm/8 mm	200	1890470000
ESG 8/19 MC white	AEG	19 mm/8 mm	200	1652220000
ESG 9/6 MC white	WI SAI-Active series	9 mm/6 mm	400	1888360000
ESG 9/11K MC white	self-adhesive	11 mm/9 mm	200	1857440000
ESG 9/17 MC white	CLI TM sleeve	17 mm/9 mm	200	1724760000
ESG 9/17 K white	self-adhesive	17 mm/9 mm	200	1674760000
ESG 9/17 K yellow	self-adhesive	17 mm/9 mm	200	1753500000
ESG 9/20 MC Universal white	ESG 9/20+Murr distr.+Festo CPV/CPI	20 mm/9 mm	200	1856720000
ESG 9/20 MC white w/o foot	TMC pocket	20 mm/9 mm	200	1770500000
ESG 9/20 L MC white	Lumberg distributor	20 mm/9 mm	200	1890460000
ESG 9/20 MC yellow	Siemens+Möller+WI SAI distributor	20 mm/9 mm	200	1766160000
ESG 9/20 MC white	Siemens+Möller+WI SAI distributor	20 mm/9 mm	200	1609940000
ESG 9/20 MC Türkis	Siemens+Möller+WI SAI distributor	20 mm/9 mm	200	1866690000
ESG 10/17 MC white	Allen Bradley/Festo MT	17 mm/10 mm	200	1856700000

ESG - Custom printing

Type	Width/Length	Qty	Order No.
ESG 6/15 K MC	15 mm/6 mm	40	1880090000
ESG 6/15 Riders.	15 mm/6 mm	40	1881290000
ESG 6/17 K MC	17 mm/6 mm	40	1880080000
ESG 8/17 Sys Pro M MC	17 mm/8 mm	40	1755350000
ESG 8/17 MC	17 mm/8 mm	40	1674750000
ESG 8/17 SCHS MC	17 mm/8 mm	40	1766640000
ESG 8/19 MC	19 mm/8 mm	40	1652230000
ESG 9/11 K MC	11 mm/9 mm	40	1857450000
ESG 9/17 MC	17 mm/9 mm	40	1770480000
ESG 9/17 K MC	17 mm/9 mm	40	1674770000
ESG 9/20 Universal MC	20 mm/9 mm	40	1856730000
ESG 9/20 o. Foot MC	20 mm/9 mm	40	1770510000
ESG 9/20 MC	20 mm/9 mm	40	1609950000
ESG 10/17 MC	17 mm/10 mm	40	1856710000

ESG - accessory - tag carrier rail

Type	Application	Width/Length	Qty	Order No.
SCHS 1 black	ESO/protection strip	17 mm/1000 mm	1	0138900000
SCHS 2 self-adhesive black	ESG 8/17 SCH ; DEK ; WS	8 mm/1000 mm	1	1720600000
SCHS 2 black	ESG 8/17 SCH ; DEK ; WS	8 mm/1000 mm	1	0337400000
SCHS 3 self-adhesive black	ESG 7/20	10 mm/1000 mm	1	1753480000
SCHS 4 self-adhesive grey	ESG 7/20	10 mm/1000 mm	1	1753460000
STR SCHS 1 transparent		12.5 mm/500 mm	1	0139200000
ESO SCHS 1 white		12.5 mm/500 mm	1	0139000000

SwitchMark SM



SM - blank

Technical specification

Material	Polyamide
UL 94 flammability rating	V2
Min. temperature, continuous	-40 °C
Max. temperature, continuous	100 °C

SM is a marker system for control and signalling devices. The tags clip into the holder or are fixed with the adhesive tape already attached. Individual tags can be created with the SMark-Laser, PrintJet, Plotter or MC-Mobilo marking systems.

- Produce your own markers quickly and suit your needs.
- No need to keep stocks of expensive standard tags.
- Hardwearing printing quality with the PrintJet as a substitute or engraving.
- We recommend the ETO SM protective film for extreme applications.
- Holders can be used for the Ø 22 mm push-buttons from Siemens, ABB, Moeller and Télémécanique.

Ordering data

Type	Length	width	Qty.	Order No. white	Order No. silver
SM 27/8 MC	8 mm	27 mm	80	1699820000	1713680000
SM 27/12.5 MC	12.5 mm	27 mm	80	1699840000	1713700000
SM 27/18 MC	18 mm	27 mm	80	1699860000	1713740000
SM 27/27 MC	27 mm	27 mm	60	1773220000	1773230000

D



SM - blank - self-adhesive

Technical specification

Material	Polyamide
UL 94 flammability rating	V2
Min. temperature, continuous	-40 °C
Max. temperature, continuous	100 °C

Ordering data

Type	Length	width	Qty.	Order No. white	Order No. silver
SM 27/8 K MC	8 mm	27 mm	80	1812630000	1771930000
SM 22/22 K MC	22 mm	22 mm	80	1877570000	1877590000
SM 27/12.5 K MC	12.5 mm	27 mm	80	1699880000	1713720000
SM 27/18 K MC	18 mm	27 mm	80	1707270000	1713760000
SM 27/27 K MC	27 mm	27 mm	60	1783000000	1782990000

SM - Custom printing

Type	Length	width	Qty.	Order No.
SM 22/22 K	22 mm	22 mm	16	1877580000
SM 27/8	8 mm	27 mm	80	1699830000
SM 27/8 K	8 mm	27 mm	80	1713690000
SM 27/12.5 K	12.5 mm	27 mm	80	1699890000
SM 27/12.5	12.5 mm	27 mm	80	1699850000
SM 27/18 K	18 mm	27 mm	80	1707280000
SM 27/18	18 mm	27 mm	80	1699870000
SM 27/27 K	27 mm	27 mm	60	1783010000
SM 27/27	27 mm	27 mm	60	1773240000



SM - accessory - holder

Technical specification

Material	Polyamide 66
UL 94 flammability rating	V2
Min. temperature, continuous	-40 °C
Max. temperature, continuous	100 °C
Colour	black

SM is a marker system for control and signalling devices. The tags clip into the holder or are fixed with the adhesive tape already attached. Individual tags can be created with the SMark-Laser, PrintJet, Plotter or MC-Mobilo marking systems.

- Produce your own markers quickly and suit your needs.
- No need to keep stocks of expensive standard tags.
- Hardwearing printing quality with the PrintJet as a substitute or engraving.
- We recommend the ETO SM protective film for extreme applications.
- Holders can be used for the Ø 22 mm push-buttons from Siemens, ABB, Moeller and Télémécanique.

Ordering data

Type	Length	width	Qty.	Order No.
SM-H 27/12,5	42 mm	27 mm	25	1716640000
SM-H 27/18	48 mm	27 mm	25	1716630000
SM-H 27/27	59 mm	27 mm	10	1782710000



SM - accessory - protective film

Technical specification

Material	Polyester film
UL 94 flammability rating	HB
Min. temperature, continuous	-20 °C
Max. temperature, continuous	80 °C
Colour	transparent

Ordering data

Type	Length	width	No. per sheet	Qty.	Order No.
ETO SM 27/8	8 mm	27 mm	165	10	1720570000
ETO SM 27/12,5	12.5 mm	27 mm	100	10	1720580000
ETO SM 27/18	18 mm	27 mm	112	10	1720590002
ETO SM 22/22	22 mm	22 mm	112	10	1880720000
ETO SM 27/27	27 mm	27 mm	70	1	1805840000

ClipCard CC



CC - blank

Technical specification

Material	Polyamide 66
UL 94 flammability rating	V2
Min. temperature, continuous	-40 °C
Max. temperature, continuous	100 °C

The ClipCard device markers in MultiCard format represent an alternative to engraving. The range is used to identify electrical installations and switchgear. Thanks to the established MultiCard format, labelling with SMark-Laser, PrintJet, Plotter and MC_Mobilo is possible.

- Hardwearing printing quality with the PrintJet as a substitute for engraving
- Universal fixing
- Holder (fixed with screws or cable ties)
- Tag rail (self-adhesive or screwed)
- Self-adhesive tags

Ordering data

Type	Length	width	Qty.	Order No. white	Order No. silver
CC 15/17 MC	17 mm	15 mm	80	1876570000	1876610000
CC 15/27 MC	27 mm	15 mm	80	1876770000	1876760000
CC 15/49 MC	49 mm	15 mm	40	1877260000	1877240000
CC 15/60 MC	60 mm	15 mm	40	1877350000	1877340000

D



CC - blank - self-adhesive

Technical specification

Material	Polyamide 66
UL 94 flammability rating	V2
Min. temperature, continuous	-40 °C
Max. temperature, continuous	100 °C

Ordering data

Type	Length	width	Qty.	Order No. white	Order No. silver
CC 15/17 K MC	17 mm	15 mm	80	1876590000	1876580000
CC 15/27 K MC	27 mm	15 mm	80	1876640000	1876780000
CC 15/49 K MC	49 mm	15 mm	40	1877220000	1877270000
CC 15/60 K MC	60 mm	15 mm	40	1877310000	1877360000

CC - Custom printing

Type	Length	width	Qty.	Order No.
CC 15/17 K MC	17 mm	15 mm	16	1876600000
CC 15/17 MC	17 mm	15 mm	16	1876620000
CC 15/27 K MC	27 mm	15 mm	16	1876750000
CC 15/27 MC	27 mm	15 mm	16	1876630000
CC 15/49 K MC	49 mm	15 mm	8	1877230000
CC 15/49 MC	49 mm	15 mm	8	1877200000
CC 15/60 K MC	60 mm	15 mm	8	1877320000
CC 15/60 MC	60 mm	15 mm	8	1877300000



CC - accessory - holder

Technical specification

Material	Polyamide 66
UL 94 flammability rating	V2
Min. temperature, continuous	-40 °C
Max. temperature, continuous	100 °C
Colour	black

Ordering data

Type	Length	width	Qty.	Order No.
CC-H 15/17	17 mm	15 mm	75	1790430000
CC-H 15/27	27 mm	15 mm	45	1790410000
CC-H 15/49	49 mm	15 mm	25	1790420000
CC-H 15/60	60 mm	15 mm	25	1878910000



CC - accessory - tag carrier rail

Technical specification

Material	PVC
UL 94 flammability rating	HB
Min. temperature, continuous	-20 °C
Max. temperature, continuous	80 °C
Colour	black

Ordering data

Type	Length	width	Qty.	Order No.
CC-Rail 1000	1000 mm	17 mm	1	1790150000
CC-Rail transparent 1000	1000 mm	19 mm	1	1790160000



CC - accessory - protective film

Technical specification

Material	Polyester film
UL 94 flammability rating	V2
Min. temperature, continuous	-40 °C
Max. temperature, continuous	100 °C
Colour	transparent

Ordering data

Type	Length	width	No. per sheet	Qty.	Order No.
ETO CC 15/17	17 mm	15 mm	228	10	1880850000
ETO CC 15/27	27 mm	15 mm	133	10	1880810000
ETO CC 15/49	49 mm	15 mm	76	10	1880830000
ETO CC 15/60	60 mm	15 mm	57	10	1880840000

CC - accessory - protective strip

Type	Length	width	Qty.	Order No.
STR CC 15/17	17 mm	15 mm	80	1888310000
STR CC 15/27	27 mm	15 mm	80	1888290000
STR CC 15/49	49 mm	15 mm	40	1888300000
STR CC 15/60	60 mm	15 mm	40	1888280000

LogiMark



LogiMark - blank

Technical specification

Material	Polyamide 66
UL 94 flammability rating	V2
Min. temperature, continuous	-40 °C
Max. temperature, continuous	100 °C

LogiMark is a marker that is used for identifying a wide range of electrical installations and switchgears. Numerous diverse fixing arrangements are possible due to the fixing in a holder, with cable tie or screw, and attaching a self-adhesive LogiMark-Card. Users can label the cards individually using highly resistant thermal transfer or plotter printing.

- high-contrast thermal transfer printing,
- cheque-card or 1/2-card format.

Ordering data

Type	Length	Width	Colour of material	Qty	Order No.
LogiMark 1/2 Wh	85.4 mm	27 mm	white	200	1675111044
LogiMark 1/2 GE	85.4 mm	27 mm	yellow	200	1675111687
LogiMark 1/2 BL	85.4 mm	27 mm	blue	200	1675111693
LogiMark 1/2 RT	85.4 mm	27 mm	red	200	1675111686
LogiMark 1/2 GN	85.4 mm	27 mm	green	200	1675111688
LogiMark 1/2 VI	85.4 mm	27 mm	violet	200	1675111689
LogiMark 1/2 OR	85.4 mm	27 mm	orange	200	1675111690
LogiMark 1/2 GR	85.4 mm	27 mm	grey	200	1675111691
LogiMark 1/2 BR	85.4 mm	27 mm	brown	200	1675111692
LogiMark WS	85.4 mm	54 mm	white	100	1607681044
LogiMark GE	85.4 mm	54 mm	yellow	100	1607681687
LogiMark BL	85.4 mm	54 mm	blue	100	1607681693
LogiMark RT	85.4 mm	54 mm	red	100	1607681686
LogiMark BR	85.4 mm	54 mm	brown	100	1607681692
LogiMark GN	85.4 mm	54 mm	green	100	1607681688
LogiMark GR	85.4 mm	54 mm	grey	100	1607681691
LogiMark OR	85.4 mm	54 mm	orange	100	1607681690
LogiMark VI	85.4 mm	54 mm	violet	100	1607681689

LogiMark - Custom printing

Type	Length	Width	Qty	Order No.
LogiMark 1/2	27 mm	85.4 mm	1	1675120000
LogiMark	54 mm	85.4 mm	1	1607690000

LogiMark - accessory - holder

Technical specification

Material	Polyamide 66
UL 94 flammability rating	V2
Min. temperature, continuous	-40 °C
Max. temperature, continuous	100 °C

Type	Length	Width	Colour of material	Qty	Order No.
LogiMark holder ES 1/2	90 mm	31 mm	grey	40	1675130002
LogiMark holder ES 1/2	90 mm	31 mm	black	40	1675130001
LogiMark holder ES	90 mm	58 mm	beige	20	1631640003
LogiMark holder ES	90 mm	58 mm	grey	20	1631640002
LogiMark holder ES	90 mm	58 mm	black	20	1631640001
LogiMark holder	90 mm	58 mm	black	20	1603290000

LogiMark - for self-adhesive

Type	Length	Width	Qty	Order No.
LogiMark DKB 1/2	81 mm	23 mm	20	1755100000
LogiMark DKB	81 mm	50 mm	10	1755110000



LM MT 300

- self-adhesive polyester labels
- suitable for DIN A4 laser printers
- abrasion-resistant
- high heat resistance
- for marking all kinds of switchgear and equipment,
- can also be written on with a ballpoint pen of the Weidmüller STI-S pen

Ordering data

Technical specification

Material	Polyester, no PVC
UL 94 flammability rating	HB
Min. temperature, continuous	-45 °C
Max. temperature, continuous	150 °C

Type	Length	No. per sheet	Qty.	Order No. white	Order No. yellow	Order No. silver
LM 12x6	12	322	10		1882910000	
LM 15/4.63	15	627	10	1724141044	1724141687	1724140001
LM 15/6	15.2	484	10	1686361044	1686361687	1686360001
LM 15x9	15	186	10		1882890000	
LM 17/9	17.8	290	10	1724151044	1724151687	1724150001
LM 18/6.5	18	290	10	1749321044	1749321687	1749320001
LM 20/8	20.3	264	10	1686381044	1686381687	1686380001
LM 25.4/12.7	25.4	147	10	1686391044	1686391687	1686390001
LM 26/10	26	156	10	1686401044	1686401687	1686400001
LM 27/8	27	198	1		1861510000	
LM 27/18	27	90	10			1873810000
LM 30/20	30	78	10	1724161044	1724161687	1724160001
LM 40/6	40	90	10	1760461044		
LM 45/14	45	60	10			1784330000
LM 56/22	56	36	10	1686421044	1686421687	1686420001
LM 60/36	60	21	10	1686431044	1686431687	1686430001
LM 105/148	105	4	10	1724171044	1724171687	1724170001
LM 202/12	202	22	10		1915320000	
LM 210/148	210	2	10	1724181044	1724181687	1724180001
LM 210/297	210	1	10	1686441044	1686441687	1686440001



THM MT 30x

The ThermoMark labels offer brilliant printing quality thanks to the thermal transfer technology. Different materials and the user-friendly printing system of THM Pro plus M-Print Pro optimises every marking requirement.

- High-quality polyester labels in various colours available,
- automatic positioning of the labels in the printer for perfect centring of the printing on every label.
- The THM Pro printer ensures hardwearing printing output.

Ordering data

Technical specification

Material	Polyester film
UL 94 flammability rating	HB
Min. temperature, continuous	-40 °C
Max. temperature, continuous	150 °C

Type	Length	No. per sheet	Qty.	Order No. white	Order No. yellow	Order No. silver
THM 15/6	15	10000	1	1753231044	1753231687	1753230001
THM 16/7	16	10000	1		1852520000	
THM 17/9	17	10000	1		1856650000	
THM 18/6	18	10000	1	1753271044	1753271687	1753270001
THM 18/9	18	10000	1	1753251044	1753251687	1753250001
THM 20/8	20	10000	1	1753241044	1753241687	1753240001
THM25.9/7.1	25.9	5000	1	1891770000		
THM 25/12	25	10000	1	1751751044	1751751687	1751750001
THM 26/10	26	10000	1	1751761044	1751761687	1751760001
THM 26.5/26.5	26.5	5000	1			1852600000
THM 26.5/17.5	26.5	10000	1			1770090000
THM 30/20	30	6000	1	1753261044	1753261687	1753260001
THM 32/9	32	6000	1	1751771044		1751770001
THM 38/19	38	2000	1	1751801044	1751801687	1751800001
THM 38/32	38	1000	1			1862350000
THM 45/23	45	2000	1	1751811044	1751811687	1751810001
THM 57/27	57	2000	1			1852540000
THM 65/35	65	1000	1	1751831044	1751831687	1751830001
THM 101/48	101	500	1	1751821044	1751821687	1751820001
THM 101/74	101	500	1			1762960001
THM 101/150	101	250	1			1778170000

Blank labels



PageTab

PageTab are textile labels in sheet form made of PVC-free acrylic fabric. Except for the 8 x 20 version, all labels have a black border.

Technical specification

Material	Acrylic-coated textile
Adhesive	Permanent acrylic copolymer
Min. temperature, continuous	-29 °C
Max. temperature, continuous	93 °C

Ordering data

Type	Length	Width	No. per sheet	Qty	Order No.
PAGETAB 15X9	15 mm	9 mm	310	25	1686160000
PAGETAB 19X11	19 mm	11 mm	200	25	1686170000
PAGETAB 20X8	20 mm	8 mm	280	25	1686180000
PAGETAB 28X11	28 mm	11 mm	125	25	1686190000
PAGETAB 38X11	38 mm	11 mm	100	25	1686200000
PAGETAB 56X22	56 mm	22 mm	24	25	1686210000
PAGETAB 60X35	60 mm	35 mm	16	25	1686220000

D



TabPack

TabPack consists of blank labels in a handy format for marking where required with the STI pen or a ballpoint pen.

Technical specification

Material	Acrylic-coated textile
Adhesive	Permanent acrylic copolymer
Min. temperature, continuous	-29 °C
Max. temperature, continuous	93 °C

Ordering data

Type	Length	Width	No. per sheet	Qty	Order No.
TABPACK 14X9	14 mm	14 mm	840	1	1686110000
TABPACK 15X6	15 mm	15 mm	1000	1	1686120000
TABPACK 19X11 M. RAND	19 mm	19 mm	440	1	1686130000
TABPACK 21X8	21 mm	21 mm	640	1	1686140000
TABPACK 38X11 M. RAND	38 mm	38 mm	220	1	1686150000



ET S7 non-adhesive labels

Technical specification

Material	Polycarbonate
Min. temperature, continuous	-40 °C
Max. temperature, continuous	150 °C

The ET S7 non-adhesive labels in A4 format are used for labelling the Siemens S300, S400 and S7 modules. They can be printed with a laser printer to suit individual requirements by means of the Weidmüller M-Print Pro software.

- Background colour yellow or turquoise with black preprinted characters (boxes)
- Labels easily separated (non-adhesive)

Ordering data

Type	Length	Width	No. per sheet	Qty	Order No.
ET S7-12/50 yellow	50 mm	12 mm	84	10	1804480000
ET S7-12/50 turquoise	50 mm	12 mm	84	10	1865440000
ET S7-300-yellow-1	100 mm	22.6 mm	16	10	1821020000
ET S7-300-yellow-2	208 mm	17.3 mm	22	10	1847650000
ET S7-300-turquoise-1	100 mm	22.6 mm	16	10	1865450000
ET S7-300-turquoise-2	208 mm	17.3 mm	22	10	1865460000
ET S7-400-yellow-1	251 mm	11.5 mm	14	10	1821040000
ET S7-400-yellow-2	251 mm	11.5 mm	14	10	1821030000
ET S7-400-yellow-3	251 mm	13.5 mm	14	10	1847640000
ET S7-400-turquoise-1	251 mm	11.5 mm	14	10	1865470000
ET S7-400-turquoise-2	251 mm	11.5 mm	14	10	1865480000
ET S7-400-turquoise-3	251 mm	13.5 mm	14	10	1865490000

Printed labels



Symbol Pack

Technical specification

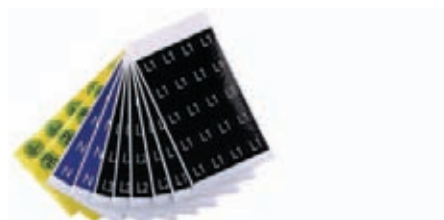
Material	Acrylic-coated textile
Adhesive	Permanent acrylic copolymer
Min. temperature, continuous	-45 °C
Max. temperature, continuous	80 °C
Colour of material	yellow

Symbol Pack is a pocket-sized package with preprinted electrical symbols on perforated sheets. The perfect solution for marking electrical systems, with good resistance to alkyl-alcohols and petrol.

Ordering data

Type	Length	Height	Printing	Qty	Order No.
Symbol Pack	9 mm	19 mm	Symbol 2	1	1685700000
Symbol Pack	14 mm	14 mm	Symbol 1	1	1685690001
Symbol Pack	14 mm	14 mm	⚡	1	1685690002
Symbol Pack	25 mm	25 mm	Lightning flash in triangle1	1	1741090000
Symbol Pack	50 mm	50 mm	Lightning flash in triangle1	1	1741100000
Symbol Pack	75 mm	75 mm	Lightning flash in triangle1	1	1741110000

D



Service Pack

Technical specification

Material	Acrylic-coated textile
Adhesive	Permanent acrylic copolymer
Min. temperature, continuous	-45 °C
Max. temperature, continuous	80 °C

Service Pack is a pocket-sized package with preprinted symbols on perforated sheets. The all-round solution for marking electrical systems, with good resistance to alkyl-alcohols and petrol.

Ordering data

Type	Length	Height	Printing	Qty	Order No.
Service Pack L1	16 mm	16 mm	L1	1	1707350001
Service Pack L2	16 mm	16 mm	L2	1	1707350002
Service Pack L3	16 mm	16 mm	L3	1	1707350003
Service Pack N	16 mm	16 mm	N	1	1707350004
Service Pack PE	16 mm	16 mm	PE	1	1707350006
Service Pack Earth	16 mm	16 mm	W	1	1707350005



Marko Cards

Technical specification

Material	Acrylic-coated textile
Adhesive	Permanent acrylic copolymer
Min. temperature, continuous	-29 °C
Max. temperature, continuous	80 °C
Colour of material	yellow

Marko Cards are strips of labels printed with a lightning flash. This symbol is available in four different sizes. For marking electrical equipment, with good resistance to alkyl-alcohols and petrol.

Ordering data

Type	Length	Height	Printing	Qty	Order No.
Lightning Triangle Card	100 mm	100 mm	Lightning flash in triangle10	10	1700550001
Marko Card	200 mm	200 mm	Lightning flash in triangle10	10	1700560001
Marko Card	25 mm	25 mm	Lightning flash in triangle10	10	1700530001
Marko Card	50 mm	50 mm	Lightning flash in triangle10	10	1700540001



KSW 2,5 mm

Pitch 3.5 mm

Ordering data

Type	No. of poles	Printing	Qty.	Order No.
KSW 2.5 8/3.5	8	1-8	10	1873620000
KSW 2.5 14/3.5	14	1,3-27	10	1849580000
KSW 2.5 14/3.5	14	2,4-28	10	1849590000
KSW 2.5 16/3.5	16	1-16	10	1652260001
KSW 2.5 24/3.5	24	1-24	10	1652250001
KSW 2.5 24/3.5	24	25-48	10	1652250025

Pitch 3.81 mm

Type	No. of poles	Printing	Qty.	Order No.
KSW 2.5 8/3.81	8	1-8	10	1873630000
KSW 2.5 16/3.8	16	1-16	10	1873610000
KSW 2.5 24/3.81	24	1-24	10	1873600000

Pitch 5.0 mm

Type	No. of poles	Printing	Qty.	Order No.
KSW 2.5 8/5	8	1-8	10	1700660001
KSW 2.5 16/5	16	1-16	10	1630070001
KSW 2.5 20/5	20	1-20	10	1630080001
KSW 2.5 20/5	20	21-40	10	1630080021
KSW 2.5 20/5	20	41-60	10	1630080041
KSW 2.5 20/5	20	61-80	10	1630080061
KSW 2.5 24/5	24	1-24	10	1713980001

Pitch 5.08 mm

Type	No. of poles	Printing	Qty.	Order No.
KSW 2.5 8/5.08	8	1-8	10	1630100001
KSW 2.5 8/5.08	8	9-16	10	1630100009
KSW 2.5 8/5.08	8	19-26	10	1895960000
KSW 2.5 8/5.08	8	A-H	10	1630101021
KSW 2.5 10/5.08	10	1-10	10	1630020001
KSW 2.5 10/5.08	10	11-20	10	1630020011
KSW 2.5 10/5.08	10	9-18	10	1895950000
KSW 2.5 15/5.08	15	1,10-150	10	1630050001
KSW 2.5 15/5.08	15	151-300	10	1630050151
KSW 2.5 15/5.08	15	301-450	10	1630050301
KSW 2.5 15/5.08	15	1-15	10	1630060001
KSW 2.5 16/5.08	16	1-16	10	1713970001
KSW 2.5 16/5.08	16	17-32	10	1713970017
KSW 2.5 16/5.08	16	33-48	10	1713970033
KSW 2.5 24/5.08	24	1-24	10	1713990001

Pitch 7.5 mm

Type	No. of poles	Printing	Qty.	Order No.
KSW 2.5 8/7.5	8	1-8	10	1873650000
KSW 2.5 10/7.5	10	1-100	10	1630030001
KSW 2.5 10/7.5	10	101-200	100	1630030101
KSW 2.5 10/7.5	10	201-300	100	1630030201
KSW 2.5 10/7.5	10	301-400	100	1630030301
KSW 2.5 10/7.5	10	401-500	100	1630030401
KSW 2.5 10/7.5	10	1-10	10	1630040001

Pitch 7.62 mm

Type	No. of poles	Printing	Qty.	Order No.
KSW 2.5 8/7.62	8	1-8	10	1873640000

Pitch 9.0 mm

Type	No. of poles	Printing	Qty.	Order No.
KSW 2.5 10/9 W	10	1-10	10	1676710001
KSW 2.5 10/9 W	10	11-20	10	1676710011
KSW 2.5 10/9 W	10	21-30	100	1676710021

Printed labels



Ordering data

blank

Type	No. of poles	Printing	Qty.	Order No.
KSW 2.5 <50MM			1	1629960000
KSW 2.5 <100MM			10	1629980000
KSW 2.5 <150MM			10	1630000000

Custom printing

Type	No. of poles	Printing	Qty.	Order No.
KSW 2.5 <50MM			1	1629900000
KSW 2.5 <100MM			1	1629920000
KSW 2.5 <150MM			1	1629940000

D

KSW 4 mm

Pitch 3.5 mm

Type	No. of poles	Printing	Qty.	Order No.
KSW 4 8/3.5	8	1-8	10	1630190001
KSW 4 16/3.5	16	1-16	10	1630150001
KSW 4 16/3.5	16	17-32	10	1630150017
KSW 4 24/3.5	24	1-24	10	1640410001

Pitch 5.0 mm

Type	No. of poles	Printing	Qty.	Order No.
KSW 4 8/5	8	1-8	10	1700670001
KSW 4 12/5	12	1-12	10	1630130001
KSW 4 12/5	12	13-24	10	1630130013
KSW 4 16/5	16	1-16	10	1700700001
KSW 4 18/5	18	1-18	10	1630170001
KSW 4 24/5	24	1-24	10	1700710001

Pitch 5.08 mm

Type	No. of poles	Printing	Qty.	Order No.
KSW 4 8/5.08	8	1-8	10	1630200001
KSW 4 8/5.08	8	9-16	10	1630200009
KSW 4 8/5.08	8	17-24	10	1630200017
KSW 4 8/5.08	8	25-32	10	1630200025
KSW 4 8/5.08	8	33-40	10	1630200033
KSW 4 8/5.08	8	41-48	10	1630200041
KSW 4 10/5.08	10	1-10	10	1705820001
KSW 4 10/5.08	10	11-20	10	1705820011
KSW 4 10/5.08	10	21-30	10	1705820021
KSW 4 10/5.08	10	31-40	10	1705820031
KSW 4 10/5.08	10	41-50	10	1705820041
KSW 4 10/5.08	10	51-60	10	1705820051
KSW 4 10/5.08	10	61-70	10	1705820061
KSW 4 10/5.08	10	71-80	10	1705820071
KSW 4 10/5.08	10	81-90	10	1705820081
KSW 4 10/5.08	10	91-100	10	1705820091
KSW 4 16/5.08	16	1-16	10	1630160001
KSW 4 16/5.08	16	17-32	10	1630160017
KSW 4 16/5.08	16	33-48	10	1630160033
KSW 4 16/5.08	16	49-64	10	1630160049
KSW 4 16/5.08	16	65-80	10	1630160065
KSW 4 16/5.08	16	81-96	10	1630160081
KSW 4 18/5.08	18	1.3-36	10	1720530001
KSW 4 24/5.08	24	1-24	10	1630180001

Pitch 7.0 mm

Type	No. of poles	Printing	Qty.	Order No.
KSW 4 5/7	5	1-5	10	1670780001
KSW 4 9/7	9	1-9	10	1714060001
KSW 4 10/7	10	1-10	10	1714070001



Ordering data

Pitch 7.5 mm	Type	No. of poles	Printing	Qty.	Order No.
	KSW 4 8/7.5	8	1-8	10	1700690001
	KSW 4 12/7.5	12	1-12	10	1630140001
	KSW 4 12/7.5	12	13-24	10	1630140013
	KSW 4 12/7.5	12	25-36	10	1630140025
	KSW 4 12/7.5	12	37-48	100	1630140037
	KSW 4 12/7.5	12	49-60	100	1630140049

Pitch 7.62 mm	Type	No. of poles	Printing	Qty.	Order No.
	KSW 4 8/7.62	8	1-8	10	1700680001
	KSW 4 12/7.62	12	1-12	10	1652270001
	KSW 4 12/7.62	12	13-24	10	1652270013

Pitch 9.0 mm	Type	No. of poles	Printing	Qty.	Order No.
	KSW 4 10/9	10	1-10	10	1714080001

Pitch 10.16 mm	Type	No. of poles	Printing	Qty.	Order No.
	KSW 2.5 4/10.16	4	1-4	10	1630090001

blank	Type	No. of poles	Printing	Qty.	Order No.
	KSW 4 <50MM			10	1629970000
	KSW 4 <100MM			10	1629990000
	KSW 4 <150MM			10	1630010000

Custom printing	Type	No. of poles	Printing	Qty.	Order No.
	KSW 4 <50MM			1	1629910000
	KSW 4 <100MM			1	1629930000
	KSW 4 <150MM			1	1629950000

